

# Purple Reign

*Develop your collection with these local artists' creations, infused with shades of Very Peri, Pantone's 2022 Color of the Year.*

**F**or the first time in the history of its Color of the Year program, Pantone created a new color, Very Peri, reflecting the ingenious innovation occurring worldwide. This hue, with violet-red undertones, enjoys the trustworthy characteristics of the blue family while inspiring lively,

creative expression. Here, we highlight paintings, photographs, and mixed-media creations from the local artistic community that incorporate shades of this lively color — yielding renderings that serve as dynamic additions to any personal collection.



**Meera Agarwal**

*Starburst Into Spring*

Acrylic on canvas, 12" x 12"; \$180; [meeraworldart.com](http://meeraworldart.com)

## Andre Baranowski

### *Hydrangea*

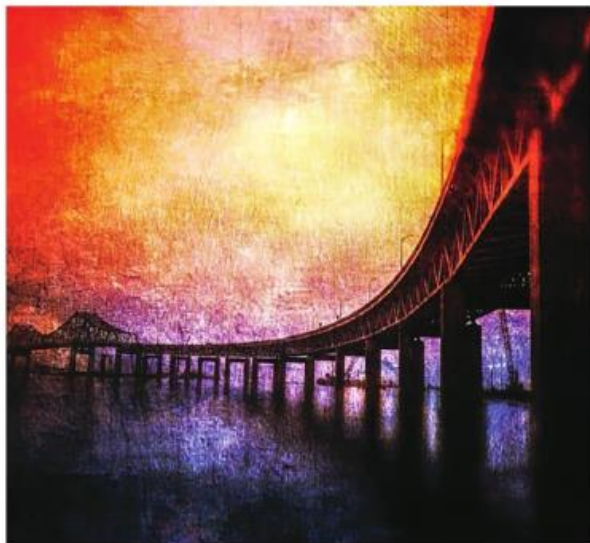
Photograph; Price available on request; [andrebaranowskiphoto.com](http://andrebaranowskiphoto.com)



## ELO Evan Lorberbaum

### *Awaken My Love*

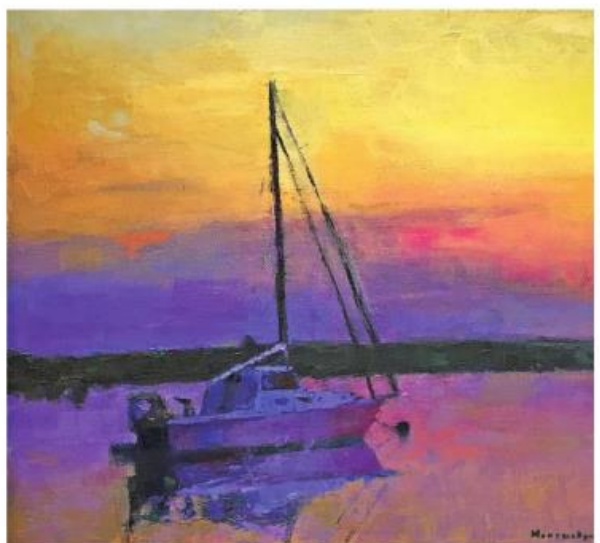
Acrylic, oil, and spray paint on canvas, 24" x 30" x 1.5"; \$3,000; [elovisualart.com](http://elovisualart.com)



## Ocean Morisset

### *Tappan Zee Bridge*

Digital photograph, 11" x 14"; \$300; [oceanmorisset.com](http://oceanmorisset.com)



## Larry Horowitz

### *Sailboat With Sunset Sky*

Oil on canvas, 18" x 24"; \$2,800; Madelyn Jordan Fine Art, Scarsdale; [larryhorowitzart.com](http://larryhorowitzart.com)

**Alina Bachmann**

*Space Corgi*

Watercolor on paper, 20" x 14"; \$325; [alinart.gallery](http://alinart.gallery)



**DJ Leon**

*Superman: Truth, Justice, and the American Way*

Lenticular print, 32" x 40"; \$4,000; Madelyn Jordon Fine Art, Scarsdale; [dj-leon-art.com](http://dj-leon-art.com)



**Richard Lang Chandler**

*Ground Level on Wooster Street*

Oil on linen, 36" x 36"; \$4,500; Oak & Oil Gallery, Katonah; [richardlangchandler.com](http://richardlangchandler.com)



**Jodi DeCrenza**

*Rhythm of My Heart*

Acrylic on canvas, 48" x 36"; \$3,000; 646-372-7404